

FULL TIME STUDY GUIDE

ABOUT US

APPRENTICESHIPS

FOUNDATIONS

COMPUTING AND
SOFTWARE
DEVELOPMENT

CONSTRUCTION
TRADES AND
BUILDING
SERVICES

HAIRDRESSING
AND HAIR AND
MEDIA MAKE UP

HEALTH, SOCIAL
AND CHILD CARE

HOSPITALITY AND
CATERING

MEDIA AND
DESIGN

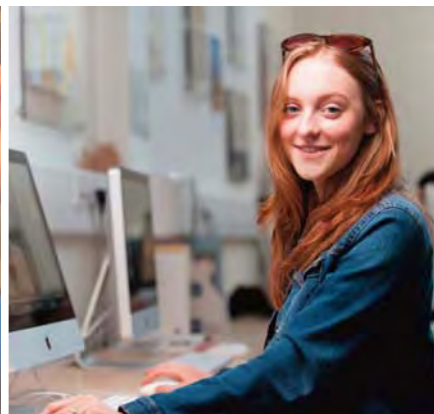
MOTOR VEHICLE
ENGINEERING

PUBLIC SERVICES
AND MILITARY
ACADEMY

SPORT AND
FITNESS

ELITE FOOTBALL
ACADEMY

INFORMATION
AND HELP

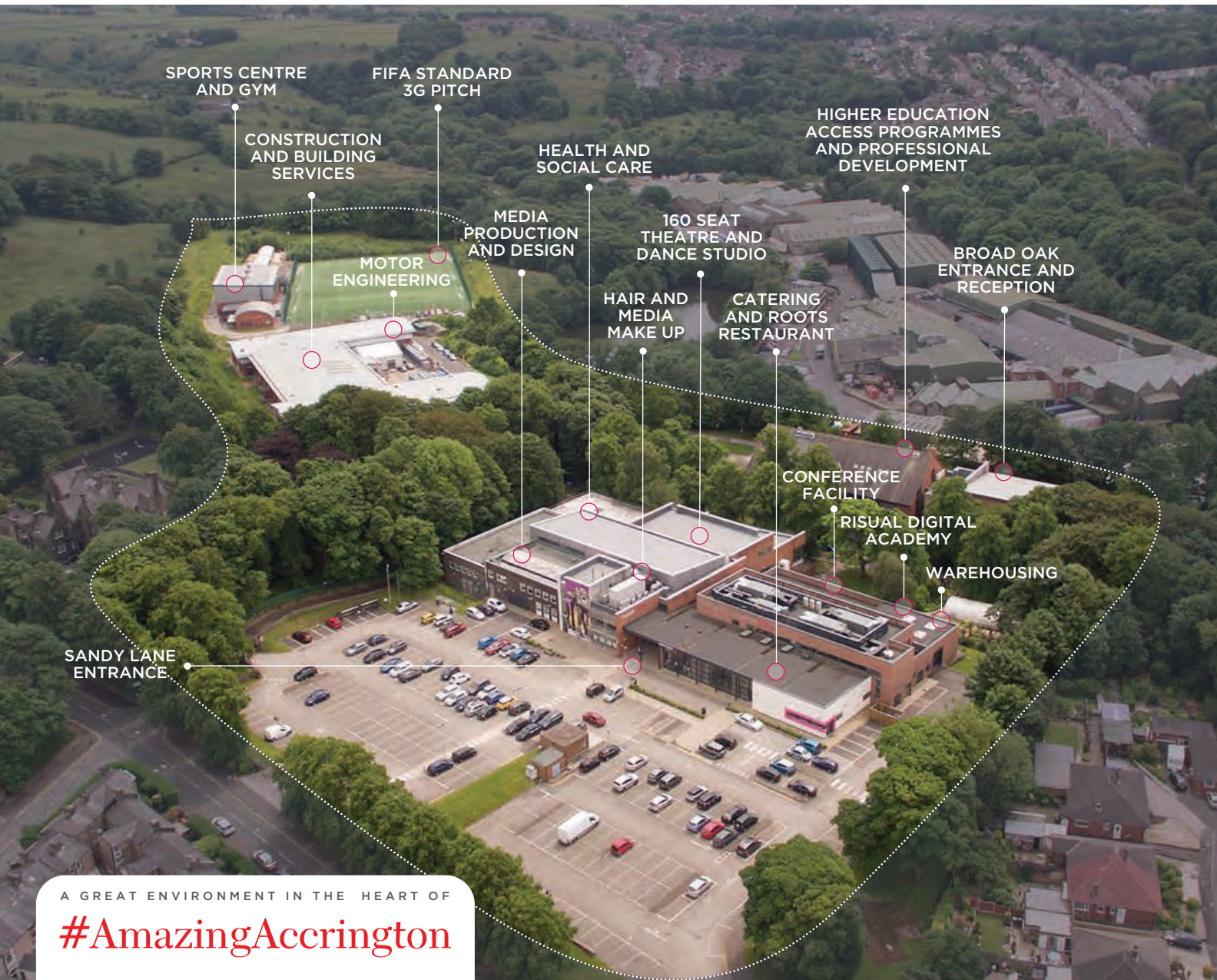


2018-19



MAKING THE DIFFERENCE FOR YOU...

OUR CAMPUS MAKES A DIFFERENCE FOR YOU...



SPORTS CENTRE
AND GYM

FIFA STANDARD
3G PITCH

CONSTRUCTION
AND BUILDING
SERVICES

HEALTH AND
SOCIAL CARE

HIGHER EDUCATION
ACCESS PROGRAMMES
AND PROFESSIONAL
DEVELOPMENT

MOTOR
ENGINEERING

MEDIA
PRODUCTION
AND DESIGN

160 SEAT
THEATRE AND
DANCE STUDIO

BROAD OAK
ENTRANCE AND
RECEPTION

HAIR AND
MEDIA
MAKE UP

CATERING
AND ROOTS
RESTAURANT

CONFERENCE
FACILITY

RISUAL DIGITAL
ACADEMY

WAREHOUSING

SANDY LANE
ENTRANCE

A GREAT ENVIRONMENT IN THE HEART OF

#AmazingAccrington



OUR DEDICATED TUTORS
WILL HELP YOU ACHIEVE A
SUCCESSFUL CAREER
PROVIDING SUPPORT AND
ENCOURAGEMENT IN A
GREAT LEARNING
ENVIRONMENT

OUR TUTORS ARE THE DIFF

APPRENTICESHIPS



GARY HANDFORD



I take great pride in my work when students gain qualifications, pass their course and go into industry.

**SEE PAGE 26 - 29
FOR MORE
INFO / COURSES**

FOUNDATIONS



HELEN SHEPHERD



I provide learners with a smooth transition into college creating a happy and positive study environment.

**SEE PAGE 30 - 33
FOR MORE
INFO / COURSES**

COMPUTING AND SOFTWARE DEVELOPMENT



JOHN ROBERTS



I am passionate about education, providing learners with skills and experiences to help them achieve within a vibrant industry.

**SEE PAGE 34 - 37
FOR MORE
INFO / COURSES**

REFERENCE MAKERS FOR YOU...




CONSTRUCTION TRADES AND BUILDING SERVICES



HAIRDRESSING AND HAIR AND MEDIA MAKE UP




HEALTH, SOCIAL AND CHILD CARE



CHRIS MORRIS

It's a great feeling knowing that we help students develop skills which transition them into the workplace.


SEE PAGE 38 - 45 FOR MORE INFO / COURSES



PAULA MIDDLEMAS

I enjoy enormously helping students achieve their potential.

SEE PAGE 46 - 49 FOR MORE INFO / COURSES



LOUISE HUDSON

It's rewarding when young people come in with low expectations and leave with qualifications they never thought possible.

SEE PAGE 50 - 53 FOR MORE INFO / COURSES

OUR TUTORS ARE THE DIFF

HOSPITALITY AND CATERING



TRACY LAFFY



It's rewarding when learners demonstrate excellent employability skills endorsed by great employer feedback.

**SEE PAGE 54 - 59
FOR MORE
INFO / COURSES**

MEDIA AND DESIGN



STEPHEN MURPHY



The young people I work with never cease to amaze me - I have learnt much from them over the years.

**SEE PAGE 60 - 63
FOR MORE
INFO / COURSES**

MOTOR VEHICLE ENGINEERING



PETER SAYOR



I am proud to bring new technologies and opportunities into the lives of those who choose to study in this sector.

**SEE PAGE 64 - 67
FOR MORE
INFO / COURSES**

REFERENCE MAKERS FOR YOU...



PUBLIC SERVICES
AND MILITARY ACADEMY

LEE MULLIGAN



I enjoy helping students succeed, I especially like to see students making successful careers in the armed forces.

**SEE PAGE 68 - 71
FOR MORE
INFO / COURSES**



SPORT AND FITNESS

GARETH HENRY



I teach the Degree in Sport Science & Coaching, I love watching learners develop, seeing them progress.

**SEE PAGE 72 - 75
FOR MORE
INFO / COURSES**



ELITE FOOTBALL ACADEMY

AMY LUCAS



I have a real passion to ensure our learners receive the same high quality I was lucky to experience.

**SEE PAGE 76 - 79
FOR MORE
INFO / COURSES**

Welcome...

Welcome to Accrington and Rossendale College. We look forward to working with you and supporting you to realise your dreams around a successful career. You might feel that you are making the biggest decision of your life, you might not be sure what you want from your career and future job. We are here to help and guide you to make the best decision possible at this point in your life.

In all our courses there is an opportunity to meet the experts, current employers and employees in your sector. You will experience what it is like to work in your chosen sector, participate in workshops and even work on live projects. In many of our areas we have real work environments run by students and open to the public such as Roots Restaurant, Seasons Hair Salon, a gym and sports centre.

Many of our courses provide you with the opportunity to choose whether you go into your chosen career, or continue to university or a degree apprenticeship when you complete your study. So you have a choice whether you decide to do it now or later. Dependent on your area of university study or your degree apprenticeship this could be with us too.

We work with many employers small and large, from across the North West and sometimes beyond. They help us in so many ways to develop and keep what you learn right at the forefront of the knowledge and skills needed in the sectors. You are also taught by dual professionals who are so much more than teachers or assessors, as they often hold professional qualifications and a vast amount of experience. We employ: nurses, midwives, physiotherapists, sport coaches, business owners, construction professionals, commercial chefs, hairdressers, motor engineers, web designers, coding experts, and the list goes on.

We are situated on an amazing site amongst trees and wildlife including several campus squirrels. We like the view from our classrooms and are sure you will. However, it doesn't mean we don't bustle as a variety of events, competitions and challenges are run across the year. There is plenty to do and you could give up your time to join us in one of our clubs too or volunteer in our community.

We look forward to seeing you in September for your first step from school leaver to professional - we are here to help you get there!



Make friends and learn



A great campus environment



WELCOME

Who are our students

Students at Accrington and Rossendale College have three key features in common:

1. A drive to achieve a successful career
2. A passion for their subject
3. A positive outlook

You only have to look at our ex-students as evidence of this. Graduates from Accrington and Rossendale College have gone on to become global entrepreneurs such as Ilyas Khan, European Cup Winners Gary and Phil Neville, World Superbike Champion Carl Fogarty, Michelin starred Chef Tim Payne and TV, stage and cinema actors such as Julie Hesmondhalgh and Lee Ingleby. So if you want to be amongst the greats, you are in safe hands at Accrington and Rossendale College.

We are also much, much more than just a place to study - we are a community. We support and inspire each other to be the best that we can be and firmly believe in

celebrating success. That's why our students go on to achieve so much.

Students at Accrington and Rossendale College are expected to study hard to get the grades they want, but college is about enjoyment and fun as much as work. We want you to broaden your experiences in life, meet new people and develop as an individual. We expect you to work hard and achieve great things during your time at Accrington and Rossendale College, but we also believe that this is a time to enjoy yourself, have new experiences and make friends, as a member of our vibrant college community.



Hairdressing and Media Make Up



Public Services and Military Academy



Health and Social Care

Girls Football Academy Win

Accrington and Rossendale College's Girls' Football Academy have added the English College's National Premier Cup to their already bulging trophy cabinet after a hard-fought 3-1 victory against rivals Reading College in May 2017. The Academy also went on to be crowned National 7-A-Side champions too.

BATJIC Awards Success

Accrington and Rossendale College celebrated hosting the annual Building & Allied Trades Joint Industrial Council (BATJIC) Awards ceremony in its state-of-the-art Heartwood Centre and Roots Restaurant by picking up no fewer than five awards including College of the Year in March 2016.

National Award Win

In July 2015 we won outstanding BTEC School/College of the Year at the National BTEC Awards. The competition celebrates achievement in the country's most widely taken vocational qualification.

Digital Academy Launch

In September 2016 we launched Lancashire's only Risual Digital Academy here at Accrington and Rossendale College. We have teamed up with Risual Limited and Microsoft to launch the North West's first Risual Microsoft Academy, based at the college's state-of-the-art Heartwood Centre.

The Risual Digital Academy, the only one of its kind in Lancashire, will not only embed digital literacy into the college curriculum but also provide support and specialist training to lecturers and students.

Why choose Accrington and Rossendale College?

We sell careers not courses

Everything that you do on your course will prepare you for your career. We regularly invite top professionals into the college to give lectures and master classes or to work alongside our students. Our learners have met, and worked alongside, Michelin starred chefs, award winning movie directors, multi-millionaire businessmen, top class professional footballers and TV personalities.

We offer a whole lifestyle package

When you aren't studying, we have everything available on campus that you need for life. Visit our sports complex, work out in the gym, have your hair done at our Seasons Salon and go for a meal in our Roots Restaurant. Plus you can take part in social activities each day on campus, join sporting groups and much more.

Travel Opportunities

Many of our courses offer our students the chance to travel abroad as part of international exchange programmes. In 2016/17 catering students worked in Sweden, construction students worked in Germany, health care and early years students worked in Denmark and the Sport Academy students worked in Portugal and Spain.

We are beautiful

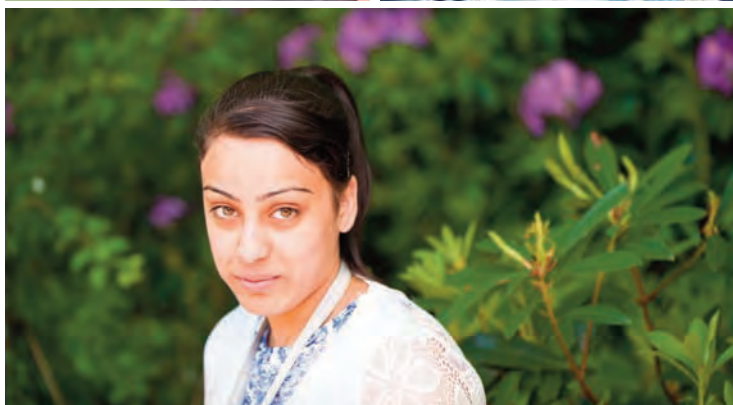
Our leafy campus is truly beautiful and an amazing place to relax between lessons.



Military Academy



Construction trades: Painting and Decorating



Health and Social care



Motor vehicle engineering



Construction Trades: Plastering

The social side of Accrington and Rossendale College...

Enjoyment Outside The Classroom

We know that all work and no play is not conducive to success. We believe that the happier you are on campus, the better you will study and achieve. That's why we put so much effort into planning social activities both on and off campus that will enrich your lives.

Events take place almost every day and whilst some are linked to your area of study others are purely for fun. Some are even free! Social events in 2016/17 have included:

- Theme park trips such as Harry Potter World and Blackpool Pleasure Beach
- Theatre and shopping trips to Manchester and beyond
- Sporting activities such as charity runs and bike rides, fitness classes and running
- Football clubs and more
- Driving theory test and road safety workshops
- Themed and celebration events
- Duke of Edinburgh's Award
- Health and wellbeing fairs
- Interview preparation and C.V. support
- Trips to universities including Edge Hill, UCLan and Lancaster
- Work place visits and guest speakers from industry
- Army development days
- Careers fairs
- Volunteering opportunities such as Accrington Pals Memorial, Accrington Stanley refurbishment and Santa Never Forgets
- Local and national competitions such as SkillBuild, Guild of Bricklayers and North West Young Chef of the Year



Creative media

Student Ambassadors

We believe that our students understand the college better than anyone and should not only have a say in how we continuously improve, but also represent us as the face of the college. That's why we are massively proud of our student ambassadors.

If you decide to join us, you will be eligible to be a prestigious student ambassador and as such you are both the face and voice of the college. No two days are the same for our ambassadors.

Our student ambassadors volunteer at our open evenings, employer events, launches, commercial events and much more. So whether they are meeting guests, showing people our wonderful campus or merely being a friendly face, our ambassadors are what people think of when they think of the college.

Student ambassadors are also crucial to the running of the college as they represent the student body and are encouraged to take part in regular Student Forum meetings where issues and ideas can be discussed.

So if you see yourself as someone who wants to make a difference to your world, becoming a student ambassador for Accrington and Rossendale College is the first step to success.

All students also have the opportunity to become a member of the NUS (National Union of Students) and College Student Union.



Construction Trades: Brickwork



Elite Football Academy

Spaces designed for you...

Accrington and Rossendale College's scenic Broad Oak Campus is situated on the outskirts of Accrington. If you like open space, the great outdoors and beautiful surroundings, it's going to suit your lifestyle perfectly.

Five Buildings, Five Ambiences, Five Ways to
enjoy Accrington and Rossendale College



The Digital and Hospitality Centre: The Heartwood Centre

Within the brand new Heartwood Centre there is the amazing Roots Restaurant with bakery, patisserie kitchen, state-of-the-art production kitchens and conference facilities. It also houses our amazing new Rissal Digital Academy which launched in September 2016!

The Health and Fitness Centre: The Sports Complex

The Sports Complex located behind the Hameldon Centre, opened in 2015 and is open to all students and their friends. Whether you are an elite athlete or a beginner, there's something for everyone with a gym, sports hall, 3G pitch and treatment room.

The Creative Centre: The Coppice Building

The Coppice Building is our creative hub and houses the hair and media make-up salons, desktop publishing and media departments, TV studio and the main cafeteria and student hub. It's always alive with creative types and a fun place to study.

The Business Centre: The Broad Oak Building

The Broad Oak Building is the most business focused of all of our buildings and comprises the Higher Education Centre, Library+, Info+, Careers Advice and Guidance Team, Learning Support, Personalised Learning Centre, snack bar and classrooms.



The Construction Centre: The Hameldon Building

The Hameldon Building is where you go to get your hands dirty as it houses our construction and motor engineering departments including state-of-the-art workshops and top of the range tools and equipment.

Enjoyment outside of the classroom

Our campus is not only designed to help you in your studies, but also to ensure you have fun outside of the classroom. This page tells you about the amazing facilities that you can access without even leaving the campus!

The Student Hub and Common Room

We have two social spaces for our students, both located in the Coppice Building.

They are a great place to chill out and meet friends between lessons. Our Student Hub is the livelier of the two spaces, with a number of activities available. As well as lots of soft seating, the student hub houses:

- Table football
- Computer games
- Table games
- Music channels
- Sky TV
- Computer access

If you want a bit of peace and quiet or simply a place to chill and eat lunch, the student common room in The Coppice Building is a more laid back affair.

We also have small 'chill out zones' dotted around the campus and a number of places to grab a bite to eat and relax.



The Sports Complex

Health and fitness are an important part of life at Accrington and Rossendale College. Many of our students take advantage of our new sports complex, whether that be as a member of our gym for massively reduced prices, playing football on the 3G sports pitch or booking the sports courts for badminton, basketball or even trampolining. If you have an hour to kill between lessons it's a great place to work up a sweat without leaving the campus. The complex houses:

- A fitness suite with up-to-date equipment
- Sports science lab
- Four court sports hall capable of hosting a wide range of sporting activities
- 3G football pitch

Roots Restaurant and Shop

Stop by the restaurant, shop and bakery for when you need some fuel before your afternoon session begins. You can grab some grub from what is arguably the best food in the borough. If you have a bit of time, you can sit in and have lunch, or if you are in a rush you can grab a sandwich, soup, salad, or hot meal to go from the shop along with freshly baked bread, cakes and biscuits.

Seasons Hair and Beauty Salon

It's approaching the weekend, you have a calendar jam packed with social events and you want to look your best. You can nip into our salon for a range of hair and beauty treatments at a time to suit you between lessons. Plus, we offer students and their friends amazing prices! Perfect!



Open evenings and tours...

Open Evenings

Our open evenings provide the perfect opportunity for you to get a feel for Accrington and Rossendale College. You can come along with your parents/carers to see our fantastic facilities, speak to tutors and current students and wander around the campus. You can also get advice if you are still unsure about which course is for you.

Our Open Evenings

Full Time courses
6:00pm - 8:00pm

26th September 2017
16th October 2017
16th November 2017

Open evenings are intended to allow you to take a closer look at the college's facilities, a chance to meet staff and students, take part in fun activities and learn more about the ranges of courses available to you.

Apprenticeships
4:00pm - 7:00pm

10th October 2017
16th January 2018
9th May 2018

Apprenticeship events provide you with an opportunity to meet the Apprenticeships team and tutors from various subject areas. You can find out about the different apprenticeships we offer, the application process and discuss the current job vacancies available. Our staff are happy to offer advice about future career progression and answer any questions you may have.

Moving Up Event - 10:00am - 2:00pm • 20th June 2018

This event has been created for applicants to Accrington and Rossendale College to experience life as a student before joining us in September. With the opportunity to experience a 'lesson' in your chosen subject, meet staff and fellow students and undertake a range of extra-curricular activities, this event is definitely one NOT to miss.

Schools Liaison Team

The Schools Liaison Team at Accrington and Rossendale College works closely with schools across the Pennine Lancashire area. We attend Careers Fairs, Parents' Evenings and Options Evenings and deliver presentations to individual class groups and assemblies.

We also get involved with mock interview days, industry/enterprise days, drop-in sessions and can organise taster sessions of college courses to be delivered in school or on our college campus.

Call: 01254 354052 • Email: schoolsliaison@accross.ac.uk

V.I.P Tours

If you are unable to attend our main college open evenings, please give us a call on 01254 354 052 to arrange to visit the college and have a guided V.I.P Tour of the entire campus.

We can provide a time and date that suits you and your family.



Shirley Lynch



Azz Mirza



Cath Robinson

Which route is right for you?

Firstly, don't panic! If it's all very confusing and you aren't sure what's right for you, we can help. We will work with you to make sure you are on a course that is best suited to your way of learning.



Am I suited to a vocational full time course?

This route will give you career specific skills and relevant qualifications that will give you the option to go into your chosen career or to higher education.

This is right for you if...

- You prefer coursework to exams and enjoy working on projects.
- You may have a career in mind but want to keep your options open to go on to university.
- You want to study a variety of topics that relate to your career.
- You want the opportunity to have some work experience to help when you start your career.
- You know you want to get career specific qualifications to help you develop your career.

Am I suited to an Apprenticeship?

An Apprenticeship will give you the opportunity to work and earn money whilst still studying towards a qualification.

This is right for you if...

- You know or have an idea what industry you would like to work in and want to start now.
- You want the experience of working in a real job but also want the student experience.
- You want to start earning money now.

You can contact us and arrange an appointment with our careers guidance service for personalised career advice.

Call: 01254 354354
Email: info@accross.ac.uk

The final choice

First you choose the subject area that you wanted to study, next you decided what type of qualification suits your learning style.

Finally we have to decide what level you can study at.

Our courses are available at different levels, which mean you can start at whatever stage is right for you and progress to higher education or into your dream career.

The level you study at will depend on the GCSE grades you get (especially GCSE English and maths) or qualifications you have already achieved.

But don't worry about making the choice, as we will assess which level is right for you when we meet you. Once this is done, you are ready to enroll!

Entry Criteria Explained

The entry criteria below are a guide to the qualifications you will be expected to have achieved to secure a place on a particular level of study programme.

Are they exact?

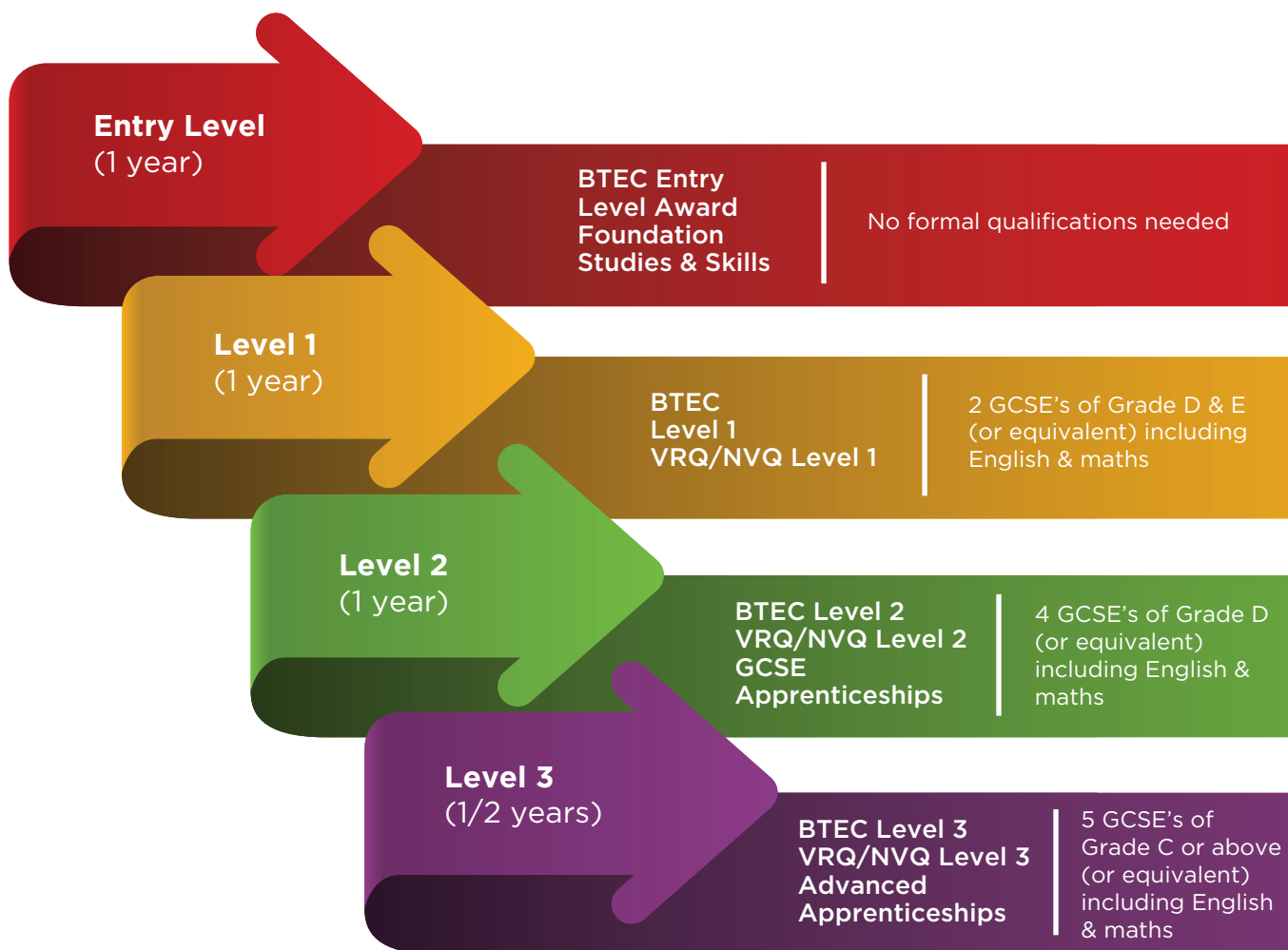
No. They are a guide to help you decide what level of programme you should be considering. Generally, you would expect to move to the next level above the one you achieved at school (e.g. if you received 2 and 3 grades in your GCSEs you should expect to enrol on a Level 1 programme).

Will I need to pass certain GCSE subjects?

Some study programmes will require different skills, and in some cases individual subjects need certain grades at GCSE. Please see individual subject pages for more detail. All students who have yet to achieve maths and/or English GCSE at grade 4 or above have to retake these subjects as part of their study programme.

What happens if I don't get the grades?

Don't worry. We offer a range of courses at many different levels and we will help you choose one that is right for you. Whichever level you start at it is possible, if you achieve well, to progress to a programme at the next level.



The New Grading Structure

Entry Level

No formal qualifications but subject to an interview and assessment of individual needs (as this offer is made subsequent to these it would be unconditional).

Level 1

2 GCSE passes at grade 3 and 2 (or equivalent) in relevant subjects including English and maths.

Level 2

2 GCSE passes at grade 4 (or equivalent) in relevant subjects, and English and maths at grade 3 or above.

Level 3

5 GCSE passes at grade 5 (or equivalent) in relevant subjects including English and maths at grade 4 or above.

Allow you to work, learn and earn at the same time with leading employers committed to developing a skilled workforce



“Not only have I learned real skills but I have been able to use these in the workplace with real customers.”



Courses

| | Level 2 | Level 3 | Level 4 | Level 5 |
|---|--------------|----------|---------|---------|
| | Intermediate | Advanced | Higher | |
| Accounting | ✓ | ✓ | ✓ | |
| Auto Electrical | | ✓ | | |
| Brickwork | ✓ | ✓ | | |
| Administration | ✓ | ✓ | | |
| Business Administration | | | ✓ | |
| Children and Young People's Workforce | ✓ | ✓ | | |
| Cleaning and Support Services | ✓ | | | |
| CMI Leadership and Management | | ✓ | | |
| Construction Management | | | ✓ | |
| Customer Service | ✓ | ✓ | | |
| Digital Learning Design | | ✓ | | |
| Early Years Educator | | ✓ | | |
| Facilities Service | ✓ | | | |
| Fitness Instructing | ✓ | | | |
| Floor Covering | ✓ | | | |
| Food Production and Cooking | ✓ | | | |
| General Construction Operations | ✓ | | | |
| Hairdressing | ✓ | ✓ | | |
| Health and Social Care | ✓ | ✓ | | |
| Hospitality | ✓ | ✓ | | |
| Software Web and Telecoms | | ✓ | ✓ | |
| Light Vehicle Maintenance | ✓ | ✓ | | |
| Management and Leadership | | ✓ | ✓ | ✓ |
| Painting and Decorating | ✓ | ✓ | | |
| Personal Training | | ✓ | | |
| Plastering | ✓ | ✓ | | |
| Professional Cookery | ✓ | ✓ | | |
| Supporting Teaching and Learning in Schools | ✓ | ✓ | | |
| Sustainable Resource Management | ✓ | | | |
| Wood Occupations (Bench) | ✓ | ✓ | | |
| Wood Operations (Site Carpentry) | ✓ | ✓ | | |

CONSTRUCTION

I have worked at Accrington and Rossendale College for the last six years as a full time Lecturer/Assessor in Brickwork and General Construction Operations. A typical day involves working with apprentices and their employers. This would include in the workplace and on a day release basis in college. Apprentices work towards recognised CSkills qualifications and have the opportunity to meet other apprentices in similar job roles. I enjoy my job here and take great pride in my work when the students pass their courses and go out into industry.



Gary Handford

BUSINESS ADMINISTRATION



I have worked at Accrington and Rossendale College for the last 10 years as a Lecturer/Assessor in Business Administration. A typical day involves working with apprentices and their employers both in the workplace and on a day release basis in the classroom. Apprentices work towards a recognised City & Guilds qualification and have the opportunity to meet other apprentices in similar job roles. I thoroughly enjoy my job here, every day is different.

Helen Pickles



Call into our reception Mon - Fri 9am - 4pm



Call 01254 354354 for more information



See www.accross.ac.uk for course details

Foundations give you the opportunity for a new start, improve your career prospects and open a window of opportunity to the future



FOUNDATIONS

The leap into further education can be a difficult time - my aim is to provide learners with a smooth transition into college. I promote a happy and positive study environment where learners are encouraged to try new experiences, make mistakes and share good practice. I take great pride in seeing the distance learners have travelled both personally and academically during the time spent with us.

Helen Shepherd

Introduction to skills for independence and work

Entry Level 2 Courses



Using employability skills

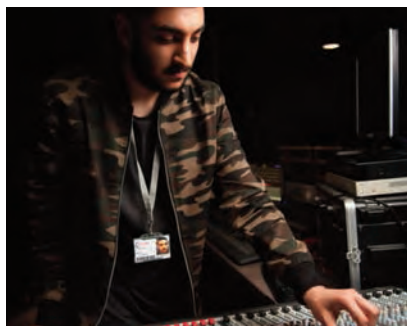


Introduction to motor vehicle



Introduction to health and social care

Entry Level 3 Courses



- Developing skills in **creative media**



- Developing skills in **hair and beauty**



- Developing skills in **sports**



- Developing skills in **hospitality and catering**



- Developing skills in **health and social care**



- Developing skills in **construction trades**

Entry Levels 2 & 3

Using Employability Skills Entry Level 2

Introduction – This is a one-year full time course which involves three days of study a week. This will give you the opportunity to improve confidence, take part in lots of practical activities, days out and give you taste of lots of different pathways available to study within the college on completion of the course.

Entry requirements – The Foundations Entry 2 Certificate in Using Employability Skills programme is aimed at students aged 16 - 19 years who are possibly achieving at Entry Level 1 or 2 and are currently undecided on an area of study. You must have English and maths at Entry Level 1 or 2, and you will be expected to attend a College interview.

Progression – Successful completion of this Entry 2 Certificate in Using Employability Skills qualification can lead to a place on an Entry Level 3 programme.

Introduction to Motor Vehicle Skills Entry Level 2

Introduction – The course is designed to provide an introduction in to the motor industry. This will include the high expectations and standards of employers within the industry encouraging and supporting you to develop the skills required to progress into further academic study and employment within the motor vehicle industry.

Entry requirements – The Entry 2 Introduction to Motor Vehicle Skills programme is aimed at students aged 16 - 19 years who are possibly achieving at Entry Level 1 or 2 and are currently undecided on an area of study. You must have English and maths at Entry Level 1 or 2, and you will be expected to attend a College interview.

Progression – Successful completion of this Entry 2 Introduction to Motor Vehicle Skills qualification can lead to a place on an Entry Level 3 programme.

Introduction to Health and Social Care Entry Level 2

Introduction – The course is designed to provide an introduction in to the health and social care industry. This will include the high expectations and standards of employers within the industry encouraging and supporting you to develop the skills required to progress into further academic study and employment within the health and social care industry.

Entry requirements – The Introduction to Health and Social Care Skills programme is aimed at students aged 16 - 19 years who are possibly achieving at Entry Level 1 or 2 and are currently undecided on an area of study. You must have English and maths at Entry Level 1 or 2, and you will be expected to attend a College interview.

Progression – Successful completion of this Entry 2 Introduction to Health and Social Care Skills qualification can lead to a place on an Entry Level 3 programme.

Developing Skills Courses Entry Level 3

Introduction – These one-year full time courses involve three days of study a week. The courses are designed to provide an introduction in to the specific industry that you are interested in. This will include the high expectations and standards of employers within the industry encouraging and supporting you to develop the skills required to progress into further academic study and employment within them. Areas covered are Catering and Hospitality, Creative Media, Hair and Beauty, Health and Social Care, Motor Vehicle Engineering and Construction Trades.

Entry requirements – The Entry 3 Developing Skills programmes are aimed at students aged 16 - 19 years who are possibly achieving at Entry Level 2. You must have English and maths at Entry Level 1 or 2, and you will be expected to attend a College interview.

Progression – Successful completion of the chosen Entry 3 Developing Skills qualification can lead to a place on a Level 1 programme at the College or in some cases employment.

The two fastest growing industries of the 21st Century offering well paid and interesting careers



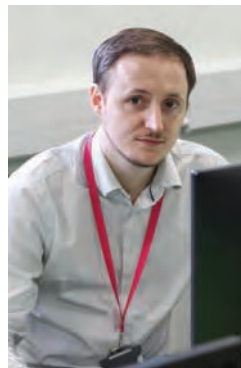
"I've studied several highly interesting subjects and now have a very useful skill set, which I did not have upon entering the course."

Courses

| | Level 1 | Level 2 | Level 3 |
|---|---------|---------|---------|
| Information and Creative Technology | ✓ | ✓ | |
| Information Technology Software Development | | | ✓ |



see www.accross.ac.uk for course details



COMPUTING & SOFTWARE DEVELOPMENT

I spent several years in industry in various roles and am currently pursuing an MA in Inclusive Education and eLearning. I am passionate about education, increasing inclusion, participation and technology in education and providing learners with skills and experiences to help them achieve within a vibrant industry

John Roberts

Levels 1, 2 & 3

Information and Creative Technology Level 1

Introduction – If you are interested in a career in the IT industry, this course is a good start for you. You will study a variety of units to develop your IT skills.

Entry requirements – Two GCSEs at grade 3 and 2 or equivalent in relevant subjects and English and maths.

Progression – Successful students will be able to progress on to a Level 2 course.

Information and Creative Technology Level 2

Introduction – If you are interested in a career in the IT industry, this course is a good start for you. You will study a variety of units and carry out lots of practical activities. Units include technology systems, website development, installing and upgrading software, installing and upgrading hardware, and computer networking.

Entry requirements – Two GCSEs at grade 4 or equivalent in relevant subjects and English and maths at grade 3 (D equivalent) or above.

Progression – Successful students will achieve Pass, Merit, Distinction or Distinction*. To progress to our Level 3 IT course you will need to achieve a Merit or better.

Information Technology – Software Development Level 3

Introduction – You will study 18 units over the two years. Units include programming, computer game design, computer graphics, animation production, systems analysis, computer systems, maintaining computer systems, website development and spreadsheet modelling.

Entry requirements – Five GCSE passes at grade 5 (or equivalent) and English and maths at grade 4 or above.

Progression – Successful completion of your course will enable either progression to Higher Education (Higher National Diploma or Degree) or professional employment.



Students from our construction courses have secured employment in prestigious local and national companies



CONSTRUCTION TRADES

For the past 21 years, I have worked at private and commercial properties gaining knowledge and guiding apprentices. I have a great team at Accrington and Rossendale College - it's a great feeling knowing that we help students develop the skills which transition them into the working environment.

Chris Morris



Courses

| | Level 1 | Level 2 | Level 3 |
|---|---------|---------|---------|
| Brickwork | ✓ | ✓ | ✓ |
| Carpentry and Joinery (Site or Bench Joinery) | ✓ | ✓ | ✓ |
| Construction and Civil Engineering | ✓ | ✓ | |
| Painting and Decorating | ✓ | ✓ | ✓ |
| Plastering | ✓ | ✓ | ✓ |
| Brickwork | ✓ | ✓ | ✓ |
| Plumbing | ✓ | ✓ | ✓ |



see www.accross.ac.uk for course details



“I always feel the tutors care and really want to help you to succeed.”



PAINTING & DECORATING

Painting and decorating is my passion and it has been for 22 years. I really enjoy receiving a new intake of school leavers and getting them ready for the world of work. It is very satisfying to engage young people in a trade and see them carve out successful careers and progress in life!

Simon Whittaker



Levels 1 & 2

Brickwork Level 1

Introduction – The course covers all the elements of brickwork and site work. Other related subjects include brick manufacture, bonding, mortar and mixing, tools and equipment, setting out, concrete, drainage and health and safety.

Entry requirements – Ideally, you will have GCSEs in English and maths at grade D or above.

Progression – Successful completion of this course will lead to the Level 2 Diploma in Bricklaying.

Brickwork Level 2

Introduction – The course covers all aspects of complex and decorative brickwork, setting out, cutting and shaping of brickwork and site studies including, planning, site organisation and building regulations.

Entry requirements – You will need to have completed your Level 1 Diploma and Functional Skills in English and maths.

Progression – Successful completion of this course will lead to the Level 3 Diploma in Bricklaying.

Carpentry and Joinery Level 1

Introduction – This course involves three days of study a week. The course will give learners the opportunity to engage in learning which will provide opportunities to develop a range of skills and techniques, personal skills and attributes essential for successful performance in working life, whilst developing their knowledge and awareness of General Construction Operations.

Entry requirements – The Level 1 Diploma in Carpentry and Joinery programme is aimed at 16-18 years who wish to pursue a career in carpentry and joinery. You must have English and maths at Grade A-D or the equivalent GCSE and you will be expected to attend a college interview.

Progression – Successful completion of this Level 1 Diploma qualification can lead to a place on a whole range of the Colleges Level 1 or Level 2 Diploma programmes.

Carpentry and Joinery Level 2

Introduction – This course involves three days of study a week. The course will give learners the opportunity to engage and develop their skills that they gained from the previous Lv1 learning. Typically, site carpentry learners will construct roofs, build stud walls and fit skirting boards etc. Bench Joinery is manufacturing timber products such as windows, doors and stairways, as well as developing skills and attributes essential for a successful career in the Construction Industry.

Entry requirements – The Level 2 Diploma in Carpentry and Joinery Study Programmes is aimed at 16-18 years who wish to pursue a career in Site carpentry or Bench joinery. You must have English and maths at Grade 9-3/A*-D or successfully completed all aspects of your previous Lv1 Carpentry and Joinery study programme. You will be expected to attend a college interview.

Progression – Successful completion of this Level 2 Study Programme qualification can lead ideally to an apprenticeship.

Levels 1 & 2

Construction and Civil Engineering Level 1

Introduction – The course covers all the elements of construction, civil engineering and site work. Other related subjects include mortar and mixing, tools and equipment, setting out, concrete, drainage and health and safety.

Entry requirements – Ideally, you will have GCSEs in English and maths at grade D or above.

Progression – Successful completion of this course will lead to the Level 2 Diploma in Construction and Civil Engineering.

Construction and Civil Engineering Level 2

Introduction – This qualification has been designed for anyone developing a career in Civil Engineering and builds upon the skills acquired from the level 1 course. Direct entry on to this course is available subject to the entry requirements. The course covers areas such as road-building, plant maintenance and formwork. You will also learn how to use various hand tools and cutting equipment, preparing and placing concrete, preparing and laying finishing floor screeds, mixing various building materials by hand and machine, laying domestic drainage and setting up signage, lighting and guarding when working on site e.g. path or road.

Entry requirements – This Level 2 Study Programmes is aimed at 16-18 years who wish to pursue a career in the Construction and Civil Engineering industry. You must have English and maths at Grade 9-3/A*-D or successfully completed all aspects of your previous Lv1 study programme. You will be expected to attend a college interview.

Progression – Ideally into employment completing an apprenticeship.

Painting and Decorating Level 1

Introduction – This course covers all elements of painting, decorating and site work. Other related subjects include: working at height, preparation of surfaces, applying water based and solvent based coatings, application of wallcoverings and decorative effects.

Entry requirements – Ideally, you will have GCSEs in English and maths at grade D or above.

Progression – Successful completion of this course will lead to the Level 2 Diploma in Painting and Decorating.

Painting and Decorating Level 2

Introduction – This course covers all the elements of painting and decorating to Diploma Level 2. Units include: know how to carry out safe working practices in construction, knowledge of building methods and construction technology, knowledge of information, qualities and communicating with others, prepare surfaces, apply paint systems by brush and roller, apply standard papers to walls and ceilings, produce specialist decorative finishes.

Entry requirements – You will need to have completed Level 1 Diploma in Painting and Decorating and have GCSEs at grades D or above in English and maths. You will need to attend a College interview and complete an initial assessment.

Progression – Successful completion of the Level 2 Diploma could lead to the Level 3 Diploma in Painting and Decorating. Progression onto the Level 3 Diploma could improve your job prospects within the construction industry.

Levels 1 & 2

Plastering Level 1

Introduction – The course covers all the elements of plastering and site work. Other related subjects include: material manufacture, mixing materials, tools and equipment, setting out and health and safety.

Entry requirements – Ideally, you will have GCSEs in English and maths at grade D or above.

Progression – Successful completion of this course will lead to the Level 2 Diploma in Plastering.

Plastering Level 2

Introduction – If you want to improve your plastering skills, learning how to fix fibrous cove/cornice and apply direct bond dry-lining to solid and timber structures this course could be just right for you. The course is a mix of practical and technical learning, getting both the skills and knowledge needed to progress into plastering.

We'll teach you all the essentials of health and safety that are vital for working in construction. You'll gain skills such as how to prepare and apply one, two and three coat plastered systems to wall and ceiling structures, set datums and wall screeds and calculate materials. You'll also learn how to analyse data which will help set you up for a career in the construction industry.

Entry requirements – You will need to have completed all aspects of your Level 1 Plastering study programme and have GCSEs at grades D/3 or above in English and maths. You will need to attend a College interview and complete an initial assessment.

Progression – Successful completion of the Level 2 study programme could lead to the Level 3 Diploma in Plastering or ideally into an apprenticeship.

Plumbing Level 1

Introduction – This qualification is for learners wanting to learn the basic skills and knowledge involved in plumbing. You will work with and know how to use copper, plastic and low carbon steel pipe work; installation, repair and maintenance of basic plumbing systems.

Entry requirements – This Level 1 Study Programme is aimed at 16-18 years who wish to pursue a career in the Construction industry. You must have English and maths at Grade 9-3/A*-D. You will need to attend a College interview and complete an initial assessment.

Progression – Successful completion of this course can lead to the Level 2 Study Programme in Plumbing, or ideally into an apprenticeship.

Plumbing Level 2 Study Programme

Introduction – The course is aimed at 16-18 year olds and you will be required to undertake more technical tasks than on the level 1 programme, including hot and cold water, sanitation and drainage and bathroom and heating installations. You will learn mostly through practical tasks and demonstrations but will also be expected to attend theory lessons. You will be continuously assessed through assignments, activity reports, phase tests, a portfolio of your work, and online exams.

Entry requirements – This Level 2 Study Programme is aimed at 16-18 years who wish to pursue a career in the Construction industry. Direct entry on to this course's is available so long as you have English and maths at Grade 9-4/A*-C. Alternately you must have completed all aspects of Level 1 Study programme. You will need to attend a College interview and complete an initial assessment.

Progression – Successful completion of this course can lead to the Level 3 Study Programme in Plumbing, or ideally into an apprenticeship.

This department is based on real life experience in a commercial salon – the department is proud of the many national awards won by previous students



HAIRDRESSING

I teach Hairdressing on different levels and age ranges - this is both challenging and rewarding with learners from various backgrounds and abilities. It's great to see their skills and mind-set develop and broaden. I enormously enjoy helping students achieve their potential.

Paula Middlemas



“It was a comfortable and relaxed learning atmosphere. Also, it was taught very professionally. The other learners were friendly and welcoming.”

Courses

| | Level 1 | Level 2 | Level 3 |
|--|---------|---------|---------|
| Introduction to the Hair and Beauty Industry | ✓ | | |
| Barbering | | ✓ | |
| Hairdressing | | ✓ | ✓ |
| Hair and Media Make-up | | ✓ | ✓ |

 see www.accross.ac.uk for course details



Levels 1, 2 & 3

Intro to the Hair and Beauty Industry Level 1

Introduction – This is a one year full time course which involves three days of study a week. This will give you the opportunity to improve confidence, take part in lots of practical activities and days out, and give you a taste of lots of different pathways available to study within the college on completion of the course.

Entry requirements – The Level 1 Certificate in Hair and Beauty programme is aimed at students aged 16-19 years who are possibly achieving at Entry Level 3 and are currently interested a career in the hair and beauty industry.

Progression – Successful completion of this Level 1 Certificate in Hair and Beauty qualification can lead to a place on a whole range of the Colleges Level 1 or Level 2 programmes.

Barbering Level 2

Introduction – Students will learn how to: analyse the hair and scalp, shampoo and condition the hair according to hair type, cut men's hair using scissors and clippers and using a range of techniques, cut facial hair and style the hair for today's current trends.

Entry requirements – 20 GCSE points or previous hairdressing skills.

Progression – Successful completion of this course can lead on to Level 3 Barbering or the Level 3 Hairdressing.

Hairdressing Level 2

Introduction – This is a one year course and you will be studying for around 18 hours per week at college. You will study a number of modules including: the art of dressing hair, client consultation, cut women's hair, colour and lighten hair and creating an image based on a theme.

Entry requirements – you will need at least four GCSEs at grade A - D or 20 points, one must be English or a Level 1 Hairdressing or Beauty Therapy qualification.

Progression – Successful completion of this course can lead on to the Level 3 Hairdressing programme or an apprenticeship in hairdressing.

Hairdressing Level 3

Introduction – This is a one-year full time course and you will be required to attend college for 18 hours a week. Some of the modules you will study include, colour hair, colour correction, creative cutting, hair-up and dressing techniques and bridal hair.

Entry requirements – You should be qualified to hairdressing Level 2. Good communication skills and a pleasant, outgoing personality are essential. A professional appearance, dedication and commitment are of extreme importance.

Progression – You could further your studies onto your teaching qualification, A1 assessors award, beauty therapy studies, own your own business, travelling / cruise liners or managerial positions within the industry.

Hair and Media Make-up Level 2

Introduction – You will gain knowledge in applying make-up for day, evening and special occasions. You will develop an understanding of the art of photographic and media make-up. You will create an image based on a theme and design face and body art. You will develop skills in shampooing and conditioning, the art of dressing hair, cutting women's hair and plaiting and twisting.

Entry requirements – You will need at least four GCSEs at grade A - D or 20 points, maths and English are to be included in these or Level 1 Hairdressing or Beauty Therapy or equivalent.

Progression – Successful completion of this course can lead on to Level 3 Theatrical, Special Effects, Hair and Media Make-up or Level 3 Hairdressing.

Hair and Media Make-up Level 3

Introduction – You will learn skills that are essential for a successful career as a make-up artist. You will develop an understanding of health and safety and client care in the industry. You will gain knowledge in applying different false lashes, photographic make-up, make-up for characters and performers. You will gain knowledge in styling and fitting postiche, airbrush make-up techniques and an understanding of cosmetic camouflage make-up for different case studies.

Entry requirements – Completion of the Level 2 Hair and Media Make-up course.

Progression – Successful completion of this course can lead on to a career in the make-up industry and further study at university.

Combining theory and practical experience, these courses provide both wide ranging employment opportunities or enable you to continue with us to an Honours degree



HEALTH & SOCIAL CARE

I have been teaching in Further Education as an early years course tutor on all levels across the health and care department after previously gaining vocational expertise in the early years sector. I find it rewarding when young people come in with low expectations and leave with qualifications they never expected to achieve.

Louise Hudson



Courses

| | Level 1 | Level 2 | Level 3 |
|--|---------|---------|---------|
| Health and Social Care & Childrens & Young People's Settings | ✓ | | |
| Health and Social Care | | ✓ | ✓ |
| Early Years Educator | | ✓ | ✓ |



see www.accross.ac.uk for course details



“The support and guidance you get from everyone on the Early years course gave me the confidence to work with others and pursue my career.”

Levels 1, 2 & 3

Health, Social Care and Children's and Young People's Settings Level 1

Introduction – This qualification will develop the knowledge and awareness of the types of provision in the Health, Social Care and Children's and Young People's sectors. They include the roles played by workers – from principles and values through to health and safety and working with others.

Entry requirements – Four GCSEs Grade E with either maths or English at grade 3 and the others at grade 2.

Progression – You can progress on to the Level 2 Diploma in Health and Social Care, the Level 2 Certificate for the Children and Young People's Workforce or the Level 2 Certificate in an Introduction to Early Years Education and Care.

Health and Social Care Level 2

Introduction – This qualification covers a range of key subject areas in health and social care and includes optional units, allowing learners to pursue an interest in chosen subject areas. Units include: equality, diversity and rights in health and social care, human growth and development, safeguarding and protection for health and social care.

Entry requirements – Four GCSEs at Grade D and above / Grade 3-9, including maths and English.

Progression – These qualifications provide direct progression to our Level 3 Extended Diploma in Health and Social Care. These qualifications do not provide a licence to practice, but may support progression into a range of job roles in the health and social care sector.

Health and Social Care Level 3

Introduction – The Technical Level 3 Extended Diploma in Health and Social Care has been designed to enable learners to access Higher Education or assist with progression into the workplace. This qualification covers a wide range of key subject areas in health and social care, including: anatomy and physiology for health and social care, psychological perspectives in health and social care, and safeguarding in health and social care.

Entry requirements – Five GCSEs at Grade C and above / Grade 3-9, including maths and English.

Progression – Achievement of the Extended Diploma supports learners' access to Higher Education and progression into a wide range of job roles within the health and social care sector. These qualifications do not provide a licence to practice, but may support progression into a wide range of job roles in the health and social care sector.

Early Years Educator Level 2

Introduction – The NCFE CACHE Level 2 Certificate in an Introduction to Early Years Education and Care prepares learners to work with children between birth and five years, with knowledge of children up to seven years.

Entry requirements – Four GCSEs at Grade D and above / Grade 3-9, including maths and English.

Progression – This qualification allows progression on to the Level 3 Early Years Educator qualifications and other Level 3 qualifications relating to child care.

Early Years Educator Level 3

Introduction – The Technical Level 3 Diploma in Early Years Education and Care (Early Years Educator) prepares learners to become Early Years Educators, enabling them to work with children from birth to five years and gain knowledge of children aged five to seven years.

Entry requirements – Five GCSEs at Grade C and above / Grade 3-9, including maths and English.

Progression – Learners can progress into various unsupervised job roles in the statutory, voluntary or private sectors and can also move onto a higher education course.

Offering the most advanced preparation and training kitchen in the country, Accrington and Rossendale College co-operates in international exchange schemes offering students the chance to work abroad



HOSPITALITY & CATERING

I work predominantly with Foundation learners, a number of whom have very little experience of Hospitality and Catering - this course opens up exciting opportunities for them.

I find it very rewarding seeing my learners achieve their qualification and demonstrating excellent employability skills endorsed by great employer feedback.

Tracy Laffy



Courses

| | Level 1 | Level 2 | Level 3 |
|------------------------------|---------|---------|---------|
| Hospitality | | ✓ | ✓ |
| Professional Cookery | ✓ | ✓ | ✓ |
| Patisserie and Confectionery | | ✓ | ✓ |



see www.accross.ac.uk for course details



“A simply outstanding course giving experience in all key areas with real workplace experience.”



CATERING

After working for 30 years in the best restaurants and hotels, I have come full circle - I was previously a catering student at the College. I am looking forward to my new role imparting my knowledge and passion to the kitchen stars of the future and helping develop Roots Restaurant.

Chris Dobson

Levels 1, 2 & 3

Hospitality (Food and Beverage Service) Level 2

Introduction – The food and beverage qualification is a good starting point to pursuing a career in hospitality. The course involves working in our new state of the art facility, Roots Restaurant. You will learn all of the skills and attributes required to progress onto a level 3 programme or start your career within the hospitality industry.

Entry requirements – Four GCSEs at Grade D and above / Grade 3-9 including maths and English.

Progression – This qualification allows progression on to the Level 3 Hospitality Supervision and Leadership.

Hospitality Level 3

Introduction – This qualification is a step to starting out a career in the hospitality industry as a team leader or supervisory/management level. The hospitality industry covers hotels, restaurants, pubs, bars and nightclubs, hospitality services, youth/backpacker hostels, holiday centres and self-catering accommodation. It operates across well known chains and in small businesses, including owner/operators, which make up just under three quarters of employers.

Entry requirements – Five GCSEs at grade C and above / Grade 3-9, including maths and English or Level 2 Food and Beverage Service.

Progression – Learners can progress into various job roles within the hospitality industry such as Restaurant Management, Self-Employment, Events Management and Catering Manager. This could also lead to higher education which usually specialises in certain areas such as Foundation Degree in Hospitality Management and Honours Degree in Hospitality Management.

Professional Cookery Level 1

Introduction – This qualification provides you with an introductory knowledge of working in hospitality and catering. The qualification is formed of mandatory units, including preparing to cook, understanding food, exploring balanced diets and plan and planning/producing dishes in response to a brief.

Entry requirements – Four GCSEs at Grade E, either maths or English at grade 3 and the other at grade 2.

Progression – You can progress on to the Level 2 Diploma in Professional Cookery or the Level 2 Food and Beverage Service.

Professional Cookery Level 2

Introduction – This professional cookery qualification is the ideal starting point if you are wishing to pursue a career as a chef. If you have the correct entry requirements, you can start your career path at Level 2, with progression onto Level 3 upon completion.

Entry requirements – Four GCSEs at Grade D and above / Grade 3-9, including maths and English.

Progression – This qualification allows progression on to the Level 3 Professional Cookery course.

Levels 2 & 3

Professional Cookery Level 3

Introduction – The Level 3 professional cookery qualification is the next step to progressing into a career as a chef in the catering industry. With this qualification, you can work to secure higher positions within the industry upon completion, access higher education, or enter the workforce in roles such as: chef de parte, sous chef, or even head chef.

Entry requirements – Five GCSEs Grade C and above / Grade 3-9, including maths and English or Level 2 professional cookery qualification. Industry experience is considered on an individual basis.

Progression – Learners can progress into various job roles within the catering industry varying from chef de parte to sous chef dependent upon experience and skill set. This could also lead to higher education which usually specialises in certain areas such as Level 4 Advanced Culinary Skills, Foundation Degree in Hospitality Management.

Patisserie and Confectionery Level 2

Introduction – This patisserie and confectionery course is perfect if you are looking for a different approach to a career in the catering industry. All units within this qualification are focused around bakery and patisserie units.

Entry requirements – Four GCSEs at Grade D and above / Grade 3-9, including maths and English.

Progression – This qualification allows progression on to the Level 3 Patisserie and Confectionery.

Patisserie and Confectionery Level 3

Introduction – The Level 3 Patisserie and Confectionery qualification is the next step to specialising in a career within this sector of the catering industry. With this qualification, you can work to secure higher positions within the sector upon completion, access higher education, or enter the workforce in a variety of roles.

Entry requirements – Five GCSEs Grade C and above / Grade 3-9, including maths and English or Level 2 patisserie and confectionery. Industry experience is considered on an individual basis.

Progression – Learners can progress into various job roles within the industry dependent upon experience and skill set. As this is a specialist field, you are likely to progress into roles as a patisserie chef or work in a confectioners or bakery. This could also lead to access to higher education.



A competitive industry where our students have an impressive record of getting interesting well paid jobs including a DJ, web designers, film producers and a successful new start production company



"I have enjoyed learning new things in my course and trying things I've never tried before, creating magazine covers etc."

Courses

| | Level 1 | Level 2 | Level 3 |
|--|---------|---------|---------|
| Creative Digital Media | ✓ | | |
| Creative Digital Media (Games Development) | | ✓ | |
| Creative Digital Media Production | | ✓ | ✓ |



see www.accross.ac.uk for course details



MEDIA & DESIGN

I have 15 years experience as a freelance TV cameraman and am passionate about teaching a subject I love which offers the opportunity for young people to work in Creative Arts. The young people I work with never cease to amaze me - I have learnt much from them over the years.

Stephen Murphy

Levels 1, 2 & 3

Creative Digital Media Production Level 1

Introduction – On the Creative Digital Media Production course you will learn the foundations to develop your skills in photography, graphics and film editing, as well as applying theory of the industry in a rich learning environment.

Entry requirements – You will require two GCSEs at Grade 2 and 3 or above (including English and maths), plus a successful interview.

Progression – Completion of the Level 1 and successful grades on literacy and numeracy means you will be able to apply to the Level 2 Extended Diploma in Creative Media Production.

Creative Media (Games Development) Level 2

Introduction – On the Games Development course you will explore a wide variety of knowledge and skills, such as gaining a better understanding of the industry, creating art and developing a practical understanding of creative game design.

Entry requirements – You will require four GCSEs at Grade 3 or above (including English and maths), plus a successful interview.

Progression – Completion of the Level 2 Diploma with a minimum merit and successful grades in literacy and numeracy means you will be able to apply to the Level 3 Extended Diploma Games Development.

Creative Digital Media Production Level 2

Introduction – Creative Digital Media Production offers a vocational learning approach to an interesting and ever expanding industry. On this course you will learn to gain a wide variety of knowledge and skills to help you apply industry knowledge in a rich learning environment.

Entry requirements – You will require four GCSEs at Grade 3 or above (including English and maths), plus a successful interview.

Progression – Completion of the Level 2 First Diploma with an overall merit and successful grades in literacy and numeracy means you will be able to apply to the Level 3 Extended Diploma in Creative Media Production (TV and Film).

Creative Digital Media Production Level 3

Introduction – This course is designed each year to reflect industry demand by a team of professionals who ensure each learner is equipped for higher education or to work within the industry at entry level. You will discover the key principles of animation, journalism, radio, filmmaking, and graphic design amongst other creative industries, as well as preparing to build your own creative portfolio.

Entry requirements – Five GCSEs at Grade 4 or above (including English and maths) plus a successful interview. Mature students are also welcome as long as they can demonstrate a suitable level of knowledge.

Progression – Completion of the Level 3 Extended Diploma means you will be able to apply to any higher education level course at any institution. The practical nature of the course will also give you valuable skills to be able to apply for entry level jobs within the industry.

Our workshop exactly resembles a real garage with a complete range of vehicles and students learn a full range of skills including vehicle repairs, restoration and advanced vehicle diagnostics



MOTOR VEHICLE ENGINEERING

My motor trade experience started at 16 and my career lasted 25 years, including franchised and non-franchised garages with practical and technical training.

I am proud to work at the College and with QTLS and am qualified to deliver Motor Engineering Qualifications from Entry Level to Level 3 bringing new technologies and opportunities into the lives of those who choose to study the sector.

Peter Saynor



Courses

| | Level 1 | Level 2 | Level 3 |
|-----------------------------|---------|---------|---------|
| Light Vehicle Engineering | ✓ | ✓ | ✓ |
| Auto-electrical Engineering | ✓ | ✓ | ✓ |



see www.accross.ac.uk for course details



“My tutor Peter Saynor has always been on hand with help and support. The theory lesson and practicals have been really good.”

Levels 1 & 2

Light Vehicle Engineering and Auto-Electrical Level 1

Introduction – This course will interest you if you are 16-19 years old and have a keen interest in the motor vehicle industry. It also can help you into full-time employment on completion your qualification. This is both a practical and theory course offering you an introduction to the motor industry, which will contribute to a full qualification including knowledge of a wide range of vehicle systems. You will cover all basic practical systems of the motor vehicle including engines, braking systems, transmission systems and electrical systems. The qualification develops both your competency in the workshop and your underpinning knowledge in the classroom.

Entry requirements – You will need GCSEs in the D/3 range or above or and have a positive attitude and the potential and stamina to complete the programme and progress. A keen interest in the motor vehicle industry, and keen interest to succeed is also required.

Progression – Successful completion of all aspects of this course can lead to the Level 2 Study Programme in Light Vehicle Engineering, or ideally into an apprenticeship.

Light Vehicle Engineering Level 2

Introduction – This course is for 16-18 year olds and will cover: advanced health and safety, light vehicle operating, principles of petrol and diesel engines, tyres, brakes, steering and suspension, vehicle electrical and electronic systems, and simple fault diagnosis. Learners will be assessed through practical tasks, written assignments and online assessment tests for each unit.

Entry requirements – Learners who have completed all aspects of the Level 1 study programme or have experience of the motor trade and are passionate about motor vehicles.

Progression – Successful completion of all aspects of this course can lead to the employment in the light vehicle engineering industry, or ideally into an apprenticeship.

Auto-Electrical Engineering Level 1

Introduction – This course is for 16-18 year olds who are passionate about a career in the Auto-electrical industry. You will study both the theory and practical aspects of the following: mechanical components, start/charge systems, engine electrical systems and external lighting systems. You will also gain a broad knowledge and understanding of health and safety in the workplace and other skills associated with working in a garage. Your time will be split between the workshops and classroom where you will be assessed by the IMI set practical assessments, online multiple choice testing and assessments set by us.

Entry requirements – You will need GCSEs in the D/3 range or above or and have a positive attitude and the potential and stamina to complete the programme and progress. A keen interest in the motor industry, and keen interest to succeed is also required.

Progression – Successful completion of all aspects of this course can lead to the Level 2 Study Programme in Auto-electrical Engineering, or ideally into an apprenticeship.

Auto-Electrical Engineering Level 2

Introduction – This course is for 16-18 year olds who are passionate about a career in the Auto-electrical industry. You study both the theory and practical aspects of the following: repairing electrical units, locating & correcting simple electrical faults, enhancing vehicle electrical system features, conducting pre & post work inspections, removing & fitting basic mechanical and electrical and trim components. Your time will be split between the workshops and classroom where you will be assessed by the IMI set practical assessments, online multiple choice testing and assessments set by us.

Entry requirements – Learners who have completed all aspects of the Level 1 study programme in Auto-electrical and/or have GCSEs in the D/3 range or above in maths and English. A positive attitude, the potential and stamina to successfully complete the programme, coupled with a keen interest in the motor industry, is also required.

Progression – Successful completion of all aspects of this course can lead to the employment in the Auto-electrical Engineering industry, or ideally into an apprenticeship.

If you have the personality, motivation and dedication this course allows you to push yourself to the limits and opens the door to many outstanding opportunities



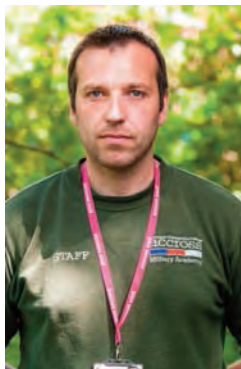
"I like how involved you get when participating in this course."

Courses

| | Level 1 | Level 2 | Level 3 |
|------------------------------------|---------|---------|---------|
| Public Services (Military Academy) | ✓ | | |
| Public Services | | ✓ | ✓ |



see www.accross.ac.uk for course details



MILITARY ACADEMY

I served 10 years in the regular army including aircraft ground handler, working with helicopters and regiment fitness instructor. After promotion I became crew of a Lynx helicopter.

What I enjoy the most working for the college is helping students succeed, I especially like to see students making successful careers in the armed forces.

Lee Mulligan

Levels 1, 2 & 3

Public Services (Military Academy) Level 1

Introduction – The modules are taught by specialised staff and will involve lectures, practical, presentations, and research. You'll attend residential work-experience with the British Army, and have numerous opportunities during the year to learn first-hand from serving regular and reserve Armed Forces personnel. In addition to developing those all-important personal qualities, you will train and receive help to prepare you to pass the selection process for the service and job of your choice; leading to a career in the Armed Forces for those who want it.

Entry requirements – Two GCSEs at Grades A-E including English and maths or equivalent. You will also be required to participate in a College interview and show a keen interest and commitment to having a successful career in the public services.

Progression – Progression onto the Level 2 Public Services course or employment in one of HM Armed Forces, the Police, Fire and Rescue Service, HM Prison Service, Border Force or other public service employment.

Public Services Level 2

Introduction – On this course you will study a variety of modules over the one year programme, including: participating in sport, outdoor and adventurous activities, leading an outdoor activity session, expedition experience, anatomy and physiology for exercise, introduction to healthy exercise and nutrition.

Entry requirements – Four GCSEs at Grades A-D including English and maths or equivalent or Level 1 in Sport or Public Service. You will also be required to participate in a College interview and show a keen interest and commitment to having a successful career in the public services.

Progression – Progression onto the Level 3 Public Services course or employment in one of HM Armed Forces, the Police, Fire and Rescue Service, HM Prison Service, Border Force or other public service employment.

Public Services Level 3

Introduction – You will study a variety of modules over the two year programme including: outdoor and adventurous expeditions, leadership and teamwork in the public services, understanding discipline in the uniformed public services, land navigation by map and compass, custodial care services, and planning and management of major incidents.

Entry requirements – Five GCSEs at Grades A-C and Grade 4 in English and maths or equivalent or Level 2 in Sport or Public Service. You will also be required to participate in a College interview and show a keen interest and commitment to having a successful career in the public services.

Progression – This Level 3 course attracts UCAS points to progress to further study at degree level in Sport, Outdoor Education or Public Services, or you could go straight into employment in one of HM Armed Forces, the Police, Fire and Rescue Service, HM Prison Service, Border Force or other public service employment.

Applicants who have not achieved at least a grade C/4 in English and maths will continue to study these subjects alongside their chosen college course.



Opening a wide range of career opportunities not limited to athletes but in many new and fast growing related industries



SPORTS & FITNESS

I completed my Masters in Sports Psychology, worked for St Helens Rugby League Club and the British Dressage team and completed my PGCE at Accrington and Rossendale College. I now lead on the Degree in Sport Science and Coaching Studies. I love watching learners develop and seeing them progress into sports careers.

Gareth Henry



“Unbelievably dedicated tutors with experience of competing in a number of professional sports.”

Courses

| | Level 1 | Level 2 | Level 3 |
|---------------------------|---------|---------|---------|
| Sports and Active Leisure | ✓ | ✓ | ✓ |



see www.accross.ac.uk for course details



Levels 1, 2 & 3

Sport and Active Leisure Level 1

Introduction – This is a one year full-time course that will provide you with an opportunity to focus on the development of personal skills, functional skills, and wider skills in a very supportive environment. This is an extremely practical course that will see you try a large range of sport and fitness activities.

Entry requirements – Two GCSEs at grades D or E or equivalent and a further reference that indicates your ability to study at this level.

Progression – With successful completion of this course you may want to continue onto the NCFE Level 2 Diploma in Sport. Alternatively, it provides a good foundation for working life in coaching, fitness centres, local community and outdoor centres.

Sport and Active Leisure Level 2

Introduction – This is a one year full-time course that will provide you with an opportunity to focus on the development of personal skills, functional skills, and wider skills in a supportive environment. You will take part in a wide range of sports and be given the chance to complete a period of work experience to test your newly improved skills and develop your contacts in the local area.

Entry requirements – Four GCSEs at Grades D or above and a further reference that indicates your ability to study at this level.

Progression – With successful completion of this course you may want to continue onto the BTEC Level 3 Extended Diploma in Sport, which is the equivalent to three A Levels.

Alternatively, it provides a good foundation for working life in coaching, fitness centres, local community and outdoor centres.

Sport and Active Leisure Level 3

Introduction – This is a two year full-time course that will provide you with an opportunity to focus on developing your wider knowledge of sport, its development, coaching and the human body. You will take part in a wide range of sports and be given the chance to complete a period of work experience to test your newly improved skills and develop your contacts in the local area.

Entry requirements – To study on the BTEC Level 3 you are required to have five GCSEs at grades C or above including maths and English (Grade 4 and above).

Progression – This course holds UCAS points and a large number of our students progress into university both in the UK and in the USA on a scholarship. This course will allow you to study a range of sports degrees including Sports Science, Sports Coaching and Sports Rehabilitation. There are also further pathways into vocations in sport such as the fitness and performance industry.



The only college in the North West to have both a boys and girls Football Academy Team in Category 1 of the English Colleges FA system ensures competition at the highest levels and opens many career opportunities



ELITE FOOTBALL ACADEMY

The skills that I developed as a football academy student at Accrington and Rossendale College have been invaluable in my ability to succeed as a lecturer in the sports department. I have a real passion to ensure that each of our learners receive the same high quality that I was lucky to experience.

Amy Lucas



Courses

| | Level 1 | Level 2 | Level 3 |
|------------------|---------|---------|---------|
| Football (BOYS) | | ✓ | ✓ |
| Football (GIRLS) | | ✓ | ✓ |



see www.accross.ac.uk for course details



“Unbelievably dedicated tutors with experience of competing in a number of professional sports.”

Levels 2 & 3

Football (Boys' and Girls') Level 2

Introduction – This is a one-year full-time course giving boys and girls aged 16-19 the opportunity to gain a vocational qualification whilst developing their football skills. You will be assigned an individualised timetable that will include the appropriate course of choice with at least six hours a week of coaching from UEFA A and B coaches as well as personalised training and nutrition programmes being available.

Entry requirements – Four GCSEs at grades D or above and a further reference that indicates your ability to study at this level.

Progression – With successful completion of this course you may want to continue onto the BTEC Level 3 Extended Diploma in Sport which is the equivalent to three A Levels.

Alternatively, it provides a good foundation for working life in coaching, fitness centres, local community and outdoor centres.

Football (Boys' and Girls') Level 3

Introduction – This is a two year full-time course giving boys and girls aged 16-19 the opportunity to gain a vocational qualification whilst developing their football skills. You will be assigned an individualised timetable that will include the appropriate course of choice with at least six hours a week of coaching from UEFA A and B coaches, as well as personalised training and nutrition programmes being available. There will also be an opportunity to play in the Elite British Colleges League and trial for regional and national squads.

Entry requirements – To study on the BTEC Level 3 you are required to have five GCSEs at grades C or above including maths and English (Grade 4 and above).

Progression – This course holds UCAS points and a large number of our students progress into university both in the UK and in the USA on a scholarship. This course will allow you to study a range of sports degrees including Sports Science, Sports Coaching and Sports Rehabilitation. Many of our students also go on to fulfil careers in sport such as the fitness industry and professional clubs.



Applicants who have not achieved at least a grade C/4 in English and maths will continue to study these subjects alongside their chosen college course.

Information and Help

Vocational qualifications

When you leave school, a world of opportunities open up to you. Whilst that's exciting, it can also be scary as choices can cause confusion. What's right for you? What level should you be studying at? What qualification type suits your learning style? This section will help you understand what we offer and what's right for you.

What are vocational qualifications?

Vocational qualifications are the bread and butter of Accrington and Rossendale College's provision. We are a work-based college and vocational qualifications are closely related to the world of work with a practical slant; but there will still be some study-based learning. The amount varies according to the course taken. Assessment can be by practical assessment, portfolio assessment (coursework) or examination. Vocational courses at this level are full-time courses.

Vocational courses are structured with more of the work taking place in college or on placement and perhaps less in your own time - although you will still have homework and coursework assignments to complete. Vocational courses at Level 3 are equivalent to 3 A-levels and provide UCAS points needed for university entry.

Types of vocational programmes include:

Foundation Learning

These programmes are available at entry level and Level 1. Foundation programmes teach you the skills you need for a practical career and prepare you for further study or employment.

All students will study maths and English to help them prepare for their chosen progression route, alongside work experience and employability skills development.



Painting and Decorating



Motor Vehicle Engineering



Construction Trades: Brickwork

BTEC Programmes

BTECs are work-related qualifications and are available across a range of sectors. They can be studied at Levels 1, 2 and 3 certificate and diploma. The Level 3 extended diploma qualification is equivalent to three A-levels.

NVQ Diploma

National Vocational Qualifications are usually completed in the workplace or a realistic work environment, where your ability to do the job is tested. Having an NVQ qualification at Level 2 or 3 is a great way to show you have work-related skills and experience.

Apprenticeships

An apprenticeship is work based training that meets the needs of the employer whilst allowing you to study towards nationally recognised qualifications. This is a way of learning the skills necessary for various careers while earning a wage at the same time. It combines real work alongside learning and training.

Next Steps - Higher Education

We offer a combination of honours degrees, professional qualifications and innovative foundation degree courses which are validated by our highly respected university partners such as Buckinghamshire New University, The University of Bolton, The University of Huddersfield and Liverpool John Moores University.

Introducing the New GCSE Grading System

The traditional A* - G grading system for English and maths GCSEs has changed[†]

There are nine grades in the new system whereas previously there were eight, A* to G. In the new system, 9 is the highest grade that a student can achieve, 1 the lowest. The highest grades of A* and A have been replaced by 7, 8 and 9. Grades B and C have also been replaced by three numbers, 4, 5 and 6. A grade C pass, recognised for many employment and higher education opportunities, will be a 5. However, a 5 is not exactly the same as a C; it is equivalent to a high C or lower grade B.

Students who have not achieved a grade 4 in maths and English will need to retake these exams as part of their post-16 study programme at college.

[†]Please note there will still be a small number of subjects that will be graded under the previous system for GCSEs completed in the summer of 2018.

| New GCSE Grading Structure | Current GCSE Grading Structure |
|----------------------------|--------------------------------|
| 9 8 7 | A* |
| 6 5 4 | B C |
| 3 2 1 | D E F G |
| U | U |

GOOD PASS (DfE)
5 & above = top of C & above

AWARDING
4 & above = bottom of C & above

BECOME CAREER-READY

Today's employment market is tougher than ever and to succeed in your chosen career you're going to have to stand out from the crowd. At Accrington and Rossendale we help you develop the skills and qualities that our partner employers tell us they really value. We've structured your course to provide you with a whole set of technical and professional skills to make you career-ready and destined for success.

WHAT'S IN YOUR COURSE?



LECTURES

Providing you with the subject-specific knowledge needed for your chosen career area.



ENHANCING EMPLOYMENT

Extra-curricular activities such as fundraising or being a student rep are fun, give you a sense of responsibility and look great on your CV!



WORK PLACEMENTS

Work experience makes you highly attractive to potential employers, dramatically improving your career prospects.



EMPLOYABILITY SKILLS

Skills such as communication, critical thinking, adaptability and leadership are essential for getting, keeping and being successful in a job.



GROUP SESSIONS

Gain important team-working skills as you develop a practical, working knowledge of your chosen subject.



INDEPENDENT STUDY

Not all study is scheduled. Assignment work develops your research and time-keeping skills and can be completed at home or in our resource centres.



VOLUNTEERING & CHARITY WORK

Eighty-seven per cent of employers regard volunteering as a 'positive effect on career progression for young people'.¹



PROFESSIONAL DEVELOPMENT MEETINGS

Regular feedback from your progress tutor keeps you on track towards all your learning goals.



ICT SKILLS

A large number of sectors rely on ICT systems, which is why having ICT skills on your CV can help you 'get the job'.



ENGLISH AND MATHS

Employers say that a C or 5 grade in these key subjects hugely improves young people's job prospects.²

Jargon Buster

Throughout this prospectus you will find words that you may never have heard before or aren't entirely sure what they mean. Use our simple jargon buster below to get to grips with the language of further education.

Apprenticeships

Apprenticeships are qualifications which are made up of on-the-job experience and college based study, allowing you to earn while you learn. As an apprentice you are employed from day one and you will spend most of your week in the workplace and a smaller portion of the week at college. It's a great way to get a head start in your dream career.

Assessments

Assessments are a way of judging what you have learnt and can include exams, practical tasks, multiple choice tests and more. All qualifications will involve some kind of assessment, but not all are written or exam based.

Enrolment

Enrolment is when you come to college to sign up to a particular course or courses. Once enrolled your future can begin.

Functional Skills

Functional skills covers maths, English and ICT (Computer Skills). These may be studied as part of a course if you haven't gained the relevant GCSE pass grades (4-9).

Initial Assessment

Initial assessment is a simple test that you may have to take to assess the current level you are working at.

Learning Resource Centre (LRC)

Learning Resource Centre is another term that is commonly used for a library, a place where you can borrow books, DVDs, journals and magazines relevant to your course and use college computers for work or internet research.

Literacy

Another term for English.

Numeracy

Another term for maths.

Pass, Merit, Distinction

These are the grades given to the units if you study a BTEC qualification. Distinction is the highest, followed by Merit, then Pass.

Portfolio of Work

Many students will build a portfolio of work which is a record of what you have learned and achieved on your course. This could be written work, photographs, charts or reviews.

Unit or Module

A course is normally made up of a number of specific units or modules that will focus on one subject area, all of which need to be completed in order to gain the qualification. For example, you may study photography as part of a media course, or marketing as part of a business course.

Vocational Qualification

A vocational qualification is a way of learning more about a specific job or industry. A vocational course will prepare you for a particular career or careers within an industry, e.g. joinery, motor vehicle engineering, software design and catering.

Work-Related Learning

All of our courses include work-related learning. These are tasks that you will perform as part of your course, which you will need in your chosen job type or career. For example, learning how to create a presentation on a business administration course would be a skill you might use if you were employed as an administrator.



Work Experience

As part of the programme of study, learners will take part in an authorised work experience placement. This will be linked to their vocational study, progression routes and career goals. Learners are encouraged to find their own placements, which are best suited to them and are supported each step of the way by course tutors, and a dedicated Work Experience Team.

The College will assess the suitability of all placements, including checks on health and safety and insurance before approving any external placements and will be on hand to support learners throughout the placement.

External placements not only provide our learners with an opportunity to build relevant work experience and get a taste of their chosen industry, but many learners are able to secure voluntary or part time work, and even apprenticeship positions.

For more information regarding work experience, speak to the College Work Experience Coordinator or your course tutor.

Call: 01254 354183 or 07989 563719

Email: placement@accross.ac.uk

Support, Information, Advice and Guidance

Visit Student Services who are based in Information situated in the main Broad Oak building.

Our Support Package

Starting college is the beginning of a new phase of your life and we are here to guide you from the moment you arrive until after you leave. No more school uniform, less time in formal, taught lessons, and a step towards adulthood. We take you on a journey and support you every step of the way, in many different ways. Here's how we will support you on your journey:



Financial Support

Speak to an advisor for information on financial support packages, child care or travel. We offer heavily subsidised bus passes for all 16 – 18 full time learners at only £30 a term. This can save our students over £400 per year on travel! You can visit Info+ who can give you advice and information on:

- Free learning available to different age groups
- Financial support packages and bursaries
- Advanced Learner Loans
- Care to Learn (Care to Learn is child care for young learners under 20 years old)
- Childcare
- Travel passes and subsidised rates for learners
- Kit and uniform
- ID cards and registration.

Please contact the Info+ Team for more information:

call: 01254 354197 or 01254 354032

email: studentadministration@accross.ac.uk

STEP 1: Careers Advice and Guidance

We can't claim to be a 'career focused college' without offering you the guidance needed to ensure you find the career that's right for you. That's why we have a dedicated team of specialist careers advisors at the campus who, along with your tutor, can give you guidance about what's right for you. They are available to help you before you enrol at college, whilst on your course and when you are coming to the end of your time with us. The team supports hundreds of people every year offering impartial information, advice and guidance in order to help plan their progression to further or higher education study or into employment. Many return to the college after leaving us to thank the team for their support and to let them know what they achieved with their help. Best of all, it's completely free!



They can offer help with:

- Supporting you to make the right decisions about your future
- Working with you to plan your journey into your career
- Showing you where job opportunities are and what the local and national job market looks like
- Helping you to get onto the right course, be that in college, an apprenticeship or moving onto higher education
- Showing you helpful career related resources

- Supporting you with job searches
- offering support and assistance with C.V. and letter writing
- Help in finding volunteering opportunities
- Help in finding supported employment opportunities working with local agencies

Careers Advice & Guidance Team

call: 01254 354354

email: info@accross.ac.uk or you can call in for an informal chat or make an appointment for an in-depth discussion.

STEP 2: Support with your studies

You met the careers advisers, chose your area of study and enrolled. Now what? When you join the college you will be assigned to a tutorial team who will guide you through your studies, track your achievement and make sure that you have all the support you need whilst you are here. They will be with you from day one, helping you to settle in and find your feet and they can access any other help that you may need.

Throughout your time with us, you will have a weekly group tutorial covering topics that will support you to develop the kind of skills that employers will be looking for. Your tutor will also support you with meeting the targets set for you so that you know how well you are doing, and know what you need to do to succeed, and can help you if you need some additional support.

They can also help you with:

- Action plans to make sure that you meet all your deadlines
- Providing help and support with anything that is affecting you
- Supporting you in dealing with any problems that you might be experiencing in or out of college
- Making sure that you know what other support is available to you and to help you access it
- Offering guidance and support in planning your progression

On top of the standard support that every student receives, we understand that some students need a little extra support. If you have a learning difficulty or disability we have a team of specialists who can support you. The teaching and facilities in college are designed to be inclusive so that everyone can participate, but if you have particular needs we will work with you to create a bespoke package of support to ensure that you succeed. If you have increased needs we will work with you and the local authority to plan your transition into college to ensure that you have the best possible experience.

What kind of support is available?

- Specialist teaching and mentoring
- Support in the classroom or in small groups
- Assistive technology
- Transition into college to support the journey from school to college
- Access to the college nurse and a personal health care plan if you have medical needs together with study support and English and maths support in the Personalised Learning Centre (PLC)
- Quiet spaces

If you need to discuss any kind of support with learning, please contact us on:

call: 01254 354050 • **email:** lsupport@accross.ac.uk

STEP 3: Support with your life

As a community we don't just help you with study support, we support you in every aspect of your life. You will have access to an on-site NHS college nurse who can provide confidential health information, advice and support on a wide range of health issues.

If you are in care, or are leaving care, we can provide a personalised support programme with dedicated, experienced staff, to work with you and any other agencies involved. We can even offer help and support with accessing bursaries, attending meetings, access to counselling and wellbeing support, health assessments, and more, to make sure that you achieve your goals.

Parent Carer relationship

We feel that parents/carers play a huge part in your success at college and we communicate with them regularly during your time with us. Parents and carers are welcome to contact your tutor at any time and we encourage them to take an active interest in your studies. Alongside this, parents and carers receive the following as a minimum each academic year:

- An invitation to Parents Evening
- Prompt contact in the event of poor attendance, progress or behaviour
- An invitation to Open Evenings to look at progression pathways
- Progress reports



Applying For Your Course - Here's How to Apply

Five easy steps to starting your course at Accrington and Rossendale College

- 1 Find your course
- 2 Enquire and visit
- 3 Apply for your course
- 4 Interview for your course
- 5 Enrol and start your course

How to apply:

Return this completed form to your Careers or Year 11 Tutor if applicable otherwise return to:
Central Admissions, Accrington and Rossendale College, Broad Oak Road, Accrington, Lancashire. BB5 2AW.

When the college receives your completed application, you will be offered an interview where you can discuss your options with college staff. When you have been accepted and gained the necessary entrance qualifications, the next stage is enrolment which usually takes place at the end of August.

Please use BLOCK CAPITALS.

Personal details

Gender: Title: National Insurance Number:

Surname: First name:

Middle name(s):

Nationality: Date of birth:

Contact details

Address line 1:

..... Town:

County: Postcode: Time at this address:

Email address:

Telephone number: Mobile number:

Have you been a resident in this country or the EU for the last three years? Yes ☐ No ☐

Emergency contact / Next of kin

Name:

Emergency contact number: Relationship:

Ethnicity

White ☐ Bangladeshi ☐ Pakistani ☐ Indian ☐ Chinese ☐ Black - Caribbean ☐ Black - African ☐

Other (please state)

School

Most recent school/college attended:

How did you hear about the college?

College Prospectus ☐ Young People's Service ☐ Job Centre ☐ College Leaflet ☐ Word of Mouth ☐
Open Evening ☐ School Liaison Team ☐ Social Media ☐ Newspaper ☐

Disabilities and learning difficulties

Do you have any medical conditions of which the College should be aware? Yes No I prefer not to say
If Yes, please tick the appropriate box(es) below.

Disability

Visual Impairment Hearing Impairment Disability affecting mobility Mental illness
Other physical disability Other medical conditions Other (please state below)

Learning Difficulties

Moderate learning difficulties Severe learning difficulties Dyslexia Dyscalculia
Multiple learning difficulties Other specific learning difficulties Other (please state below)

Course Details

Which course or vocational area would you like to study?

Exams

| Subject (Please list here the qualifications you have or are studying towards) | Level | Year | Predicted / Actual grade |
|---|-------|------|-----------------------------|
| | | | |
| | | | |
| | | | |
| | | | |
| | | | |
| | | | |

This information is gathered with regard to the data protection act and will be used for statistical purposes only.
If you do not wish your name and examination results to be published in the local papers, please tick this box

For school use only

Careers teacher's signature endorsing the estimated grades,
Signed: Date:
Attendance on a scale of 1 to 4, with 1 as excellent and 4 as poor: 1 2 3 4
Please add any other comments which may be useful:

For college use only

School Liaison Officer: School Liaison's Comment:
Date received: H.T. report requested: H.T report received:
Interview by: Interview recommendation:
Transferred to Programme

How to apply - Return this completed for to:

Central Admissions, Accrington and Rossendale College, Broad Oak Road, Accrington, Lancashire. BB5 2AW.

When the college receives your completed application, you will be offered an interview where you can discuss your options with college staff. When you have been accepted and gained the necessary entrance qualifications, the next stage is enrolment which usually takes place at the end of August.

Please use BLOCK CAPITALS.

Personal details

Gender: Title: National Insurance Number:

Surname: First name:

Middle name(s):

Nationality: Date of birth:

Contact details

Address line 1:

..... Town:

County: Postcode: Time at this address:

Email address:

Telephone number: Mobile number:

Have you been a resident in this country or the EU for the last three years? Yes ☐ No ☐**Emergency contact / Next of kin**

Name:

Emergency contact number: Relationship:

EthnicityWhite ☐ Bangladeshi ☐ Pakistani ☐ Indian ☐ Chinese ☐ Black - Caribbean ☐ Black - African ☐

Other (please state)

School

Most recent school/college attended:

How did you hear about the college?

| | | | | |
|---|---|---------------------------------------|--|--|
| College Prospectus <input type="checkbox"/> | Young People's Service <input type="checkbox"/> | Job Centre <input type="checkbox"/> | College Leaflet <input type="checkbox"/> | Word of Mouth <input type="checkbox"/> |
| Open Evening <input type="checkbox"/> | School Liaison Team <input type="checkbox"/> | Social Media <input type="checkbox"/> | Newspaper <input type="checkbox"/> | |

Disabilities and learning difficulties

Do you have any medical conditions of which the College should be aware? Yes ☐ No ☐ I prefer not to say ☐
If Yes, please tick the appropriate box(es) below.

Disability

Visual Impairment ☐ Hearing Impairment ☐ Disability affecting mobility ☐ Mental illness ☐
Other physical disability ☐ Other medical conditions ☐ Other (please state below) ☐

Learning Difficulties

Moderate learning difficulties ☐ Severe learning difficulties ☐ Dyslexia ☐ Dyscalculia ☐
Multiple learning difficulties ☐ Other specific learning difficulties ☐ Other (please state below) ☐

Course Details

Which course or vocational area would you like to study?

Exams

| Subject (Please list here the qualifications you have or are studying towards) | Level | Year | Predicted / Actual grade |
|---|-------|------|-----------------------------|
| | | | |
| | | | |
| | | | |
| | | | |
| | | | |
| | | | |
| | | | |
| | | | |
| | | | |
| | | | |
| | | | |
| | | | |

This information is gathered with regard to the data protection act and will be used for statistical purposes only.
If you do not wish your name and examination results to be published in the local papers, please tick this box

For college use only

Date received:Date interviewed:

Interview by:Interview recommendation:



Quiet places to study



Tutors always ready to support



Friendly campus environment

Applying for your Course

You can make an application to college in one of the following ways:

Online Interactive Form

You can complete an interactive application form on our website at

www.accross.ac.uk/apply-now

This is the quickest method of applying to the college. Please visit the 'How to Apply' section on the website to access the form and find further instructions to help you fill it out.

Paper Application Form

You can find an application form at the back of this prospectus. Once you have completed the form please post to:

*Central Admissions
Accrington and Rossendale College
Broad Oak Road, Accrington
Lancashire. BB5 2AW*

If there wasn't an application form in this prospectus please contact us on 01254 354354 or email info@accross.ac.uk to receive a copy. You can also find it on our website at www.accross.ac.uk/apply-now

Completing Your Application

However you apply, we will ask you for the same information. As well as your contact details, will ask you for details of which schools and colleges you have attended, and any qualifications or awards you have gained.

If you are still at school you will also need to list your predicted grades - your head of year should be able to help you with this.

If you are ready to apply for your course then call or email us using the details below or simply pop in at any time.

Call: 01254 354 354

Email: info@accross.ac.uk

What happens next?

Upon receipt of your application, you will be sent a letter inviting you for an interview. We may also contact you to clarify your course choice or ask for further information if necessary. If you have not heard from us within two weeks of sending your application form, **call 01254 354 354** to check that we have received it.

Following the interview process, we will let you know the result of your application as soon as possible.



OUR OFFER TO YOU...

- 16-19 YEAR OLD SCHOOL LEAVER COURSES
- APPRENTICESHIPS

Contact Us

Main reception

Call: 01254 389933

Information

Call: 01254 354354

Email: info@accross.ac.uk

Admissions & Enrolment:

Call: 01254 354197

Email: studentadministration@accross.ac.uk

Schools Liaison Team

Call: 01254 354052

Email: schoolsliaison@accross.ac.uk

Learning Support Team

Call: 01254 354050

Email: lsupport@accross.ac.uk

Apprenticeships

Call: 01254 354231

Email: apprenticeships@accross.ac.uk

Higher Education

Call: 01254 354047

Email: he@accross.ac.uk

Accrington and Rossendale College

Broad Oak Campus

Broad Oak Road

Accrington

Lancashire

BB5 2AW



TO BOOK A CAMPUS TOUR TEXT YOUR
NAME AND NUMBER AND WE WILL CALL
YOU BACK WITHIN TWO WORKING DAYS



The details in this course guide were correct at the time of print. The College however, reserves the right to alter the information contained in this publication at any time. Classes will run subject to sufficient numbers, please check with our staff if you want to be sure that a programme is running or a specific facility is operation. Please call the College's main reception with any enquiries you may have on 01254 389933.

Accrington and Rossendale College exists to provide high quality education and training to the widest range of local people. E&OE. September 2017.